



# GET INSIGHT TAKE ACTION IMPROVE EXPERIENCE PROCERA PACKETLOGIC

## KEY BENEFITS

### SEE MORE TRAFFIC

Industry's largest signature data-base (2,300+), updated every week

### CARRIER-CLASS STRENGTH

Scalability and reliability up to 600 Gbps of throughput in a single system

### CONTEXT-RICH PERSPECTIVES

Subscriber, Application, Content, Peering, Service Plan, Location, Topology, Device & Quality of Experience

### FLEXIBLE DEPLOYMENT

Available as NFV software or hardware-based solutions

## YOUR NETWORK HAS A STORY TO TELL.

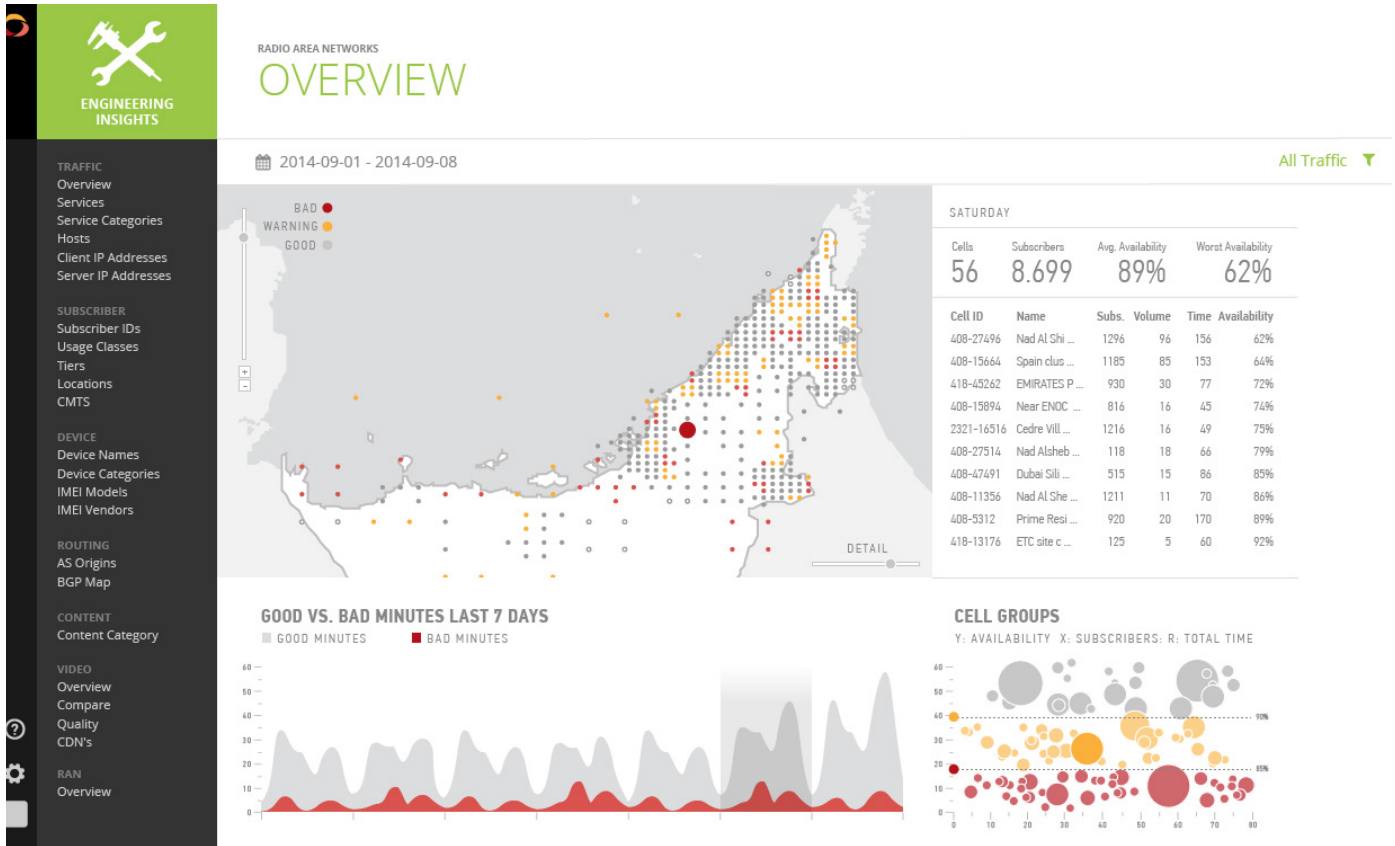
### ARE YOU LISTENING?

The Procera PacketLogic™ is the world's premier solution for Subscriber Experience Intelligence. Used by the world's largest and most demanding mobile and fixed broadband networks, PacketLogic solutions help operators monitor, manage and monetize their network traffic.

Balancing sophisticated intelligence with powerful policy enforcement, PacketLogic provides operators with insights into subscriber behavior and enables them to take action to improve user experience.

Specifically designed to support cost reduction strategies, generate new revenue streams, and aid in operator's business intelligence, PacketLogic is more than just an appliance, it's your innovation and Intelligence platform. With PacketLogic in your network, you can see more and do more in real-time.

# DESIGN



## MADE FOR CARRIERS

### GAIN INSIGHTS

Better data means better business decisions. No other solution on the market today offers the same level of context as Procera's Subscriber Experience Intelligence. Gain a better understanding of your subscribers and improve customer satisfaction while reducing churn.

### TAKE ACTION

Our ability to enhance the broadband experience for subscribers is unmatched. Whether it's optimizing network traffic, mitigating threats such as DDoS attacks or introducing new service plans that match your subscribers' behavior, you have control over your network's destiny.

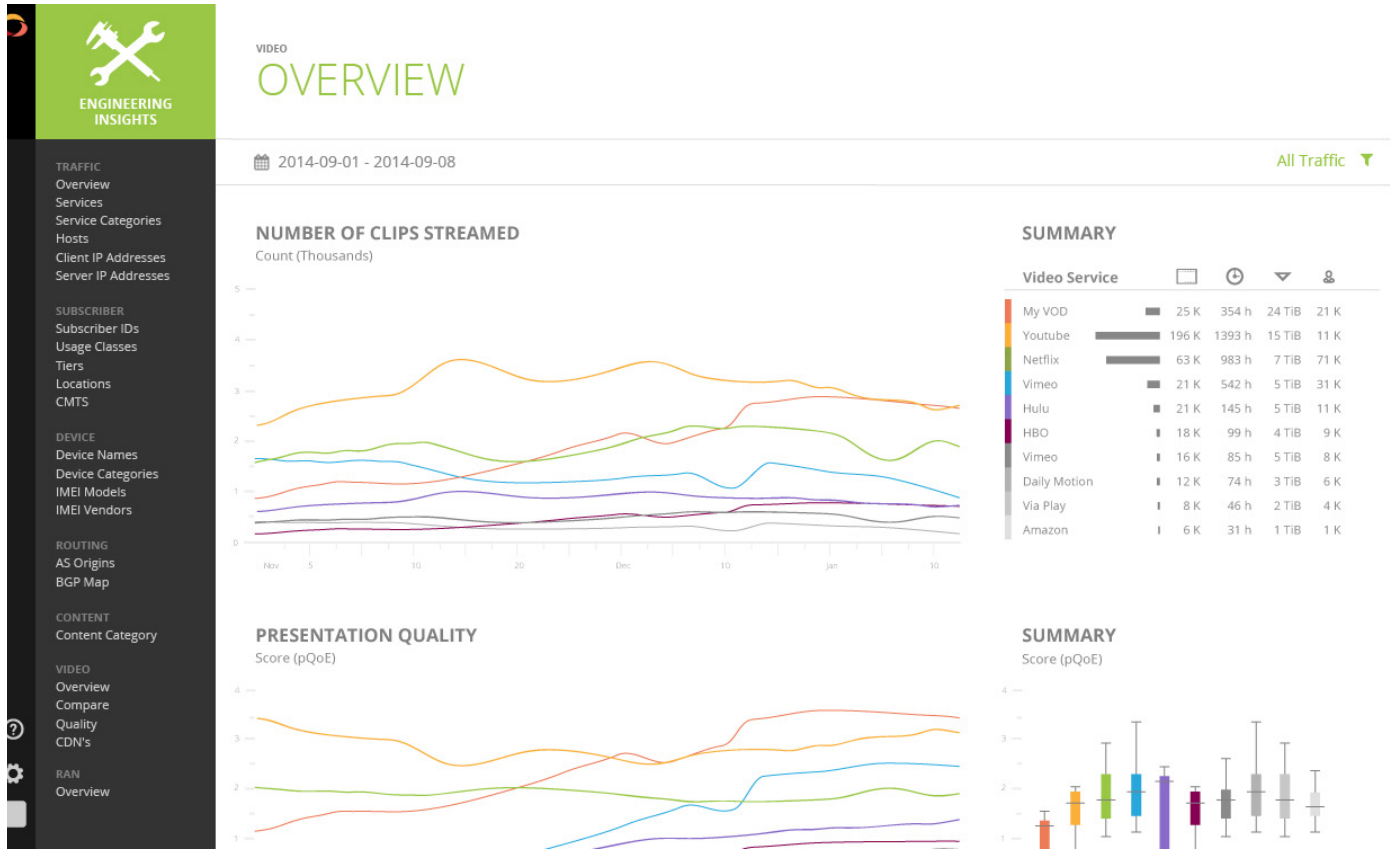
### REDUCE COSTS

PacketLogic's sophisticated congestion management, security controls, and network insights allow operators to reduce capital expenditure and operating expenses by getting more life out of their existing infrastructure - all while delivering a great subscriber experience.

### GENERATE REVENUE

Our technology gives you more service options than ever before: Introduce zero-rating plans, offer multi-device and family plans, innovate with tiered service levels and data plans, and deliver kid-friendly broadband services. The options are limitless – just like your revenue potential.

# ARCHITECTURE



## BUILT-IN SCALABILITY

Procera's revolutionary PacketLogic architecture provides operators with the flexibility to tailor their solution to meet their performance and scalability needs - for today and tomorrow.

Our modular design and agile deployment options help operators meet their technological and budgetary requirements without breaking the bank.

Our solutions can be delivered on Procera's packaged hardware appliances and chassis systems, or through Network Functions Virtualization technology running on COTS hardware.

## INTELLIGENT CORE

At PacketLogic's core is our identification engine, DRDL (Datastream Recognition Definition Language). This industry-best engine classifies and analyzes traffic in real-time to give you the most accurate picture of what's happening on your network.

Our engine was built for the carrier-class and can easily handle large volumes of data and extremely high traffic flow conditions without impacting latency. It includes the capability to import in URL databases of over 100 Million URLs that can also be classified and managed in real time for carrier-scale Parental Control offerings.

## SOFTWARE



BASE PRODUCT

# Platform and Products

Gain Insights into your network with real-time visibility into broadband traffic. Take Action and ensure that your key business and service priorities are enforced. Enable dynamic triggering and filtering based on any subscriber or application attribute. Minimize the impact network attacks have on subscribers and infrastructure. Deliver services at performance and scalability not possible with competing solutions. Improve your subscriber's experience. Integrate the solutions into your network with pre-packaged hardware or using virtualization technology with no compromises.

### SELECT YOUR OPTIONS

- + Congestion Management
- + Mitigation
- + Advanced Traffic Steering
- + Policy and Charging

### SELECT YOUR PLATFORM MODEL

PacketLogic/V, 20000 , 9000, 8000, 7000



+ EXPANSION MODULE

# Perspectives

Enhance your PacketLogic data with multiple perspectives: Subscribers, RAN, Cable, Video, Peering, Content, and other contextual information that helps you see more and do more on your broadband infrastructure. Perspectives enable specific views of the network that provide significant value over traditional network intelligence solutions thanks to the granularity of the PacketLogic solutions. Subscriber Experience Intelligence gleaned from Perspectives are available for use across all products and platforms within the PacketLogic solutions.

### SELECT YOUR OPTIONS

- + Traffic
- + Subscriber
- + RAN
- + Topology
- + Video
- + Content
- + Route
- + Device

### SELECT YOUR PLATFORM MODEL

PacketLogic/V, 20000, 9000, 8000, 7000, 1400, 1200



+ EXPANSION MODULE

## Presentation

Collect, store and visualize your Insights with the PacketLogic Intelligence Center solutions. Role-based perspectives give different departments and users the network and subscriber information they need to make informed business decisions. Empower users to see how their service offerings are performing and what changes could be made to enhance revenue . Conduct real-time, forensic investigations to diagnose subscriber issues or network attacks. Analyze trends and forecast with historical reports and dashboards as well as customizable reports and forecasts

### SELECT YOUR OPTIONS

- + Customer Care Insights
- + Engineering Insights
- + Elements
- + PacketLogic Client

### SELECT YOUR PLATFORM MODEL

PacketLogic/V, 9000, 8000, 7000, 1400, 1200



+ EXPANSION MODULE

## Professional Services

Leverage Procera's Professional Services offerings to accelerate your deployments. Revenue Express, Mobile Starter Package, Installation Services, Report Creation, as well as completely customizable packages are available as additional services from Procera to augment your PacketLogic deployments. The Professional Services team will work closely with you to define your requirements and deliver solutions to meet your deployment needs.

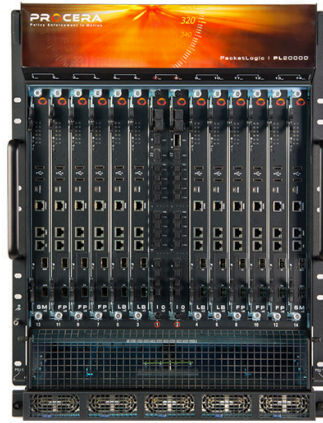
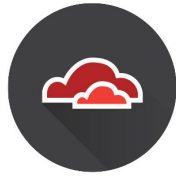
### SELECT YOUR OPTIONS

- + Mobile Starter Package
- + Revenue Express
- + Installation Services
- + Report Creation
- + Customized Packages

### SELECT YOUR PLATFORM MODEL

PacketLogic/V, 20000, 9000, 8000, 7000, 1400, 1200

# PLATFORM MODELS



VIRTUAL

200000

9000/8000

## OVERVIEW

Enables flexible deployments of PacketLogic software using industry-standard, off-the-shelf hardware and software virtual machine environments

High capacity chassis solution delivering 100GE and built to meet the most demanding performance and scalability requirements of world's largest network operators

Mid-range Subscriber Experience Intelligence Platforms designed to meet the needs of growing network operators

## SOFTWARE COMPATIBILITY

PacketLogic Real-time Enforcement  
 PacketLogic Subscriber Management  
 PacketLogic Intelligence Center  
 PacketLogic Element Manager

PacketLogic Real-time Enforcement

PacketLogic Real-time Enforcement  
 PacketLogic Intelligence Center  
 PacketLogic Element Manager

## BANDWIDTH

CPU Dependent

Up to 600 Gbps

Up to 120 Gbps

## SUBSCRIBERS

Memory Dependent

10M

3M

## CONNECTIONS

Memory Dependent

240M

10M

## CONNECTIONS PER SECOND

CPU Dependent

3M

400K



# PLATFORM MODELS



7000

1400

1200

## OVERVIEW

Subscriber Experience Intelligence Platform that is ideal for small network operators while still delivering the same functionality as the rest of the PacketLogic Product family

High-end Intelligent Center and Subscriber Management platform models designed to scale to support millions of subscribers for the world's largest and most demanding network deployments

Entry-level Intelligent Center and Subscriber Management platform models designed to meet a wide range of performance and scalability needs of small to medium sized network.

## SOFTWARE COMPATIBILITY

PacketLogic Real-time Enforcement  
PacketLogic Intelligence Center  
PacketLogic Element Manager

PacketLogic Subscriber Management  
PacketLogic Intelligence Center  
PacketLogic Element Manager

PacketLogic Subscriber Management  
PacketLogic Intelligence Center  
PacketLogic Element Manager

## BANDWIDTH

Up to 5 Gbps

N/A

N/A

## SUBSCRIBERS

100K

20M

20M

## CONNECTIONS

2M

N/A

N/A

## CONNECTIONS PER SECOND

100K

N/A

N/A



## PROCERA NETWORKS, INC.

Procera Networks, Inc. (NASDAQ: PKT), the global Subscriber Experience company, is revolutionizing the way operators and vendors monitor, manage and monetize their network traffic. Elevate your business value and improve customer experience with Procera's sophisticated intelligence solutions. For more information, visit <http://www.proceranetworks.com> or follow Procera on Twitter at @ProceraNetworks.

---

**Corporate Offices**  
Procera Networks, Inc.  
47448 Fremont Blvd  
Fremont, CA 94538

P. +1 510-230-2777  
F. +1 510-656-1355

**European Headquarters**  
Procera Networks  
Birger Svenssons Väg 28D  
432 40 Varberg, Sweden

P. +46 (0)340-48 38 00  
F. +46 (0)340-48 38 28

**Asia/Pacific Headquarters**  
Unit B-02-11,  
E-9-10 Block E Plaza Mont  
Kiara  
Mont Kiara  
50480 Kuala Lumpur,  
Malaysia