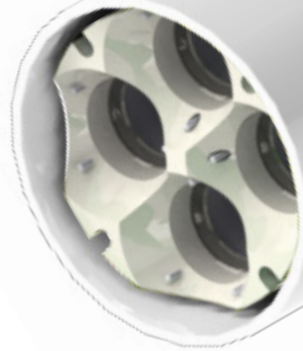


 EMTELLE

 MultipathTM

CABLE MANAGEMENT SYSTEM



Eliminates the need to winch in sub-duct

One pass cable management system

A shorter network construction time

- 1 x Ø110mm PVC outer duct with parallel socket at one end.
- 4 x Ø33mm PVC inner ducts, plain ended with internal and external chamfers.
- 1 x Moulded coupling body, encapsulating the inner ducts to connect adjoining lengths.

SYSTEM FEATURES

- The system can be installed using automated trenching techniques.
- Manufactured by a company recognised for product quality and technical innovation.
- A complete range of box terminators, bends, repair coupling, cabled duct-repair kits, adaptors to other materials, expansion joints and rope-blowing guns.
- The system is available in uPVC.
- Straighter inner-ducts giving lower inner-duct friction and longer cable installation lengths.
- Capable of being cable pulled to full drum lengths.



MULTIPATH BENEFITS

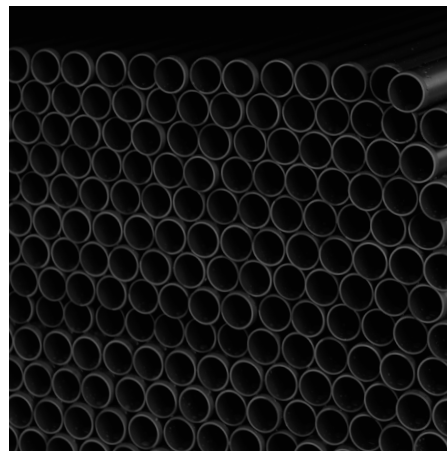
- A “one-pass” duct laying system eliminating secondary sub-duct installation.
- A shorter network construction time, offering up to 30% time saving.
- Lower network construction cost offering significant cost saving.
- Longer box centres up to 1 Kilometre, reducing box construction costs.
- Ease of future maintenance.
- A fully developed, proven and integrated cable management system backed up by a high level of technical and product support.

The product detailed within this document is designed to comply with ISO 61386 450N Class Duct.
Compliance to standards AS/CA S008 & AS/CA S009 via Telecommunications Act via
Cabling provider rules (CPR's) / ACMA and the Labelling notice.

All inner and outer ducts are manufactured to comply with BS EN 61386 (450N class).

The coupling body is located within the parallel socket of the outer duct and held securely in place by stainless steel barbed clips. Inner ducts are located and supported inside the outer duct using moulded spacers evenly spaced throughout, and by a full face locking spacer at the spigot end. The coupling body is manufactured with Ring Seals for both inner and outer ducts providing a cable management system which is watertight and airtight.

Rope placement is by a purpose made blowing gun. For additional information on rope blowing see Specification E450-032 Rope Blowing Safety Guidelines.



ACCESSORIES

- Standard Couplings
- Repair Kits (Un-cabled duct)
- Box Terminators
- Adaptors
- Slip / Repair Couplings
- Repair Kits (Cabled duct)
- Expansion Joints
- Rope Blowing guns
- Bends
- Connector Sleeves
- Expansion Plugs
- Flexible Bends



SYSTEM APPLICATIONS

- Telecommunication cables
- Data Transfer cables
- Pilot cables
- Intelligent Transport Systems (ITS)
- Digital Termination Systems (DTS)
- Motorway Communications

The product detailed within this document is designed to comply with ISO 61386 450N Class Duct.
Compliance to standards AS/CA S008 & AS/CA S009 via Telecommunications Act via
Cabling provider rules (CPR's) / ACMA and the Labelling notice.